

YVPG系列棒材线专用变频调速辊道用三相异步电动机

YVPG series bar special-used frequency speed control roll table three-phase induction motors

一、概述 General

为适应冶金行业棒材冷床输入辊道技术更新和设备改造，对交流调速技术应用的要求，开发了YVPG系列变频调速辊道用三相异步电动机。它具有体积小、调速范围广、运行可靠、维护方便等优点。电动机增加了不停机轴承润滑脂再补给装置，采用耐高温润滑剂。电动机具有加强的机械结构强度，利用变频器的低频起动功能和制动功能，可以实现频繁起、制动和正、反转，并具有较高的过载能力。

电动机附加独立的轴流风机，保证电动机在不同转速均具有良好的冷却效果。

适宜冶金工业单独驱动悬臂辊道的需要，电机的轴伸较长，滚筒可直接安装在电机轴上。电机直接通过电机上的大法兰盘与辊道盖板法兰联接，无需联轴器、轴承座、轴承等。简化传动结构，减小故障环节。

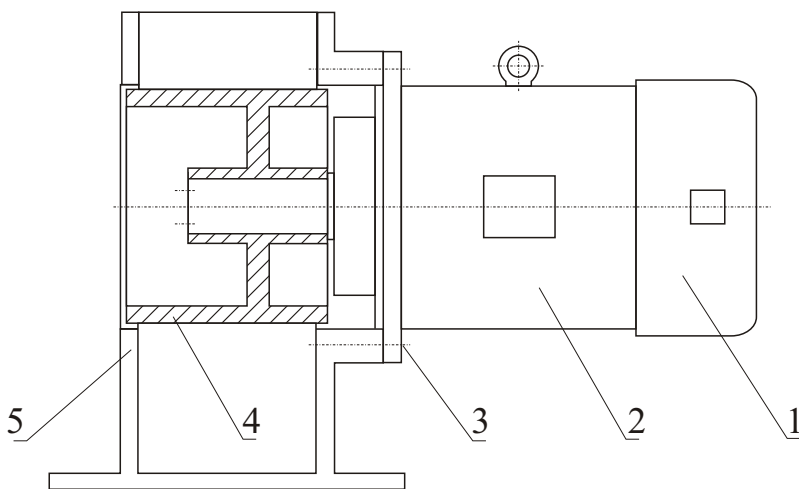
To adapt to bar cold bed input roll table technology updating, facility improvement in metallurgic industry and the requirement in application of alternating adjustable speed technology, it developed the YVPG series frequency speed control roll table three-phase asynchronous motor, which has advantages like small volume, extensive regulating range, reliable function and convenient maintenance. The motor is added the non-stop bearing grease replenishment system, and adopts fire-resistant lubricants. It is featured in reinforced mechanical structure strength, and can realize frequent start, brake and reverse and good overload capability by taking the advantage of transducer's low frequency start and brake functions.

The electrical motor is added independent screw type ventilator to ensure good cooling effect in different rotate speeds.

To meet the requirement of individual drive cantilever roll table in metallurgic industry, the shaft extension of motor is comparatively longer, and the roller can be directly fixed on motor shaft. With the simplified drive structure, the motor directly connects with roller table cover board flange through the big flanged shaft without coupling, bearing and bearing pedestal, so as to reduce malfunctioned links.

YVPG系列棒材线专用变频调速辊道用三相异步电动机

YVPG series bar special-used frequency speed control roll table three-phase induction motors



- 1—轴流风机
Screw type ventilator
- 2—电机
Motor
- 3—联接螺栓
coupling bolt
- 4—辊筒
Roll coater
- 5—辊道盖板
Roll table cover board

输入辊示意图
Intake roll sketch map

二、主要技术性能 Main technical performance

- 1、额定电压380V，额定频率50Hz，也可根据用户要求设计制造其它额定点的电压和频率。
- 2、电动机的基准工作制为S1，也可适应S2~S9的其它工作的运行场合。
- 3、电动机的绝缘等级为F级或H级。
- 4、电动机防护等级为IP54，也可按需制成IP55。
- 5、电动机为全封闭轴向风机冷却（IC416）。调速范围为20—70Hz时，也可制成全封闭轴向自扇（风扇为铝质）冷却（IC411）。
- 6、变频调速范围宽，恒转矩调速3~50Hz，恒功率调速50~100Hz。
- 7、低速性能好，低速运行时转速平稳，无爬行现象。
- 8、电动机的接线方式为Y形。

1. Rated voltage 380V, rated frequency 50HZ. It can also be designed and produced to other rated voltages and frequencies according to user's requirements.

2. The standard working system is S1, and can also adapt to other operation environment from S2 to S9.

3. The insulation level is F or H level.

4. The degree of protection is IP54, and can be made into IP55 to the needs.

YVPG系列棒材线专用变频调速辊道用三相异步电动机

YVPG series bar special-used frequency speed control roll table three-phase induction motors

5. The motor is complete shut-off axial fan cooling (IC416), and can be produced to complete shut-off axial-flow fan (aluminum made) cooling (IC411) with the regulating range of 20—70HZ.

6. It has large regulating range, 3~50HZ for speed regulation by constant torque, and 50~100HZ for speed regulation by constant power.

7. It also has good low speed capability. Still with flat torque and no bumpy performance.

8. The mode of connection is Y joins.

三、技术数据 Technical Data Table

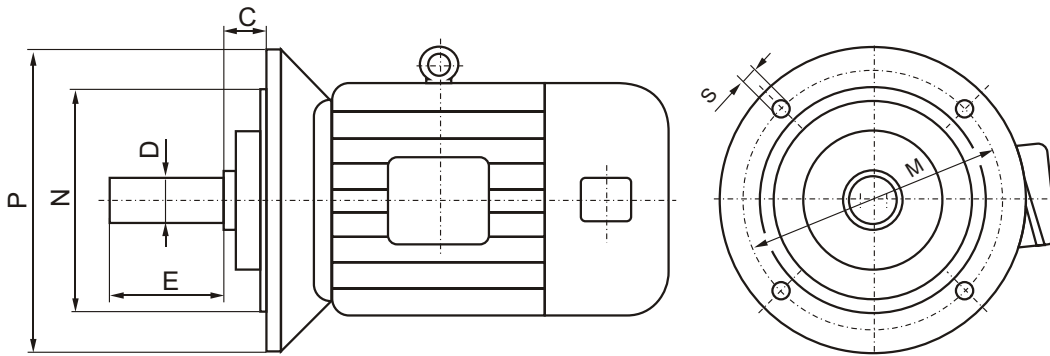
型号 Size	额定功率 Rated power KW	额定电流 Rated current A	额定转速 Rated speed r/min	堵转转矩 Blocked torque N·m	堵转电流 Blocked current A
YVPG112L1-4	1.8	4.1	1450	32	26
YVPG112L2-4	2.2	4.9	1450	40	32
YVPG132S-4	3.0	6.5	1460	55	45
YVPG132M-4	4.0	8.5	1460	75	60
YVPG160M-4	5.5	12.0	1470	90	72
YVPG160L-4	7.5	15.5	1470	120	95

四、配用风机性能 Supporting fan performance

机座号 Frame size	风机型号 Fan type	电制 Electricity	功率 Power
112	125FZY2-S	单相 220V 50HZ Single Phase	25W
132	G132	三相 380V 50HZ Three phase	55W
160	G160	三相 380V 50HZ Three phase	55W

YVPG系列棒材线专用变频调速辊道用三相异步电动机
 YVPG series bar special-used frequency speed control roll table three-phase induction motors

五、主要安装尺寸 **Mounting Dimensions**



机座号 Frame size	C	D	E	M	N	P	S
112	50	Φ 48	125	Φ 245	Φ 215	Φ 280	4-Φ 15
132	30	Φ 55	165	Φ 300	Φ 255	Φ 350	6-Φ 19
160	40	Φ 60	200	Φ 350	Φ 310	Φ 400	8-Φ 19